

| AR5 Classic-O | | 3.00 km | 135 m |
|---------------|----|---------|-------|
| 1 | MT | ▲ | |
| 2 | FD | / | ∩ |
| 3 | TT | / | ∩ |
| 4 | DA | ○ | ∩ |
| 5 | EH | ○ | ∩ |
| 6 | LH | ● | |
| 7 | UI | ○ | ○ |
| 8 | SU | ∩ | |
| 9 | PN | ∩ | < |
| 10 | JK | ∩ | ∩ |

COON BLUFF

AR5 Classic-O

Sunday, October 14, 2012

Contour Interval: 20 feet
 Declination: 11.6° East
 Scale: 1:10,000

©2007-2012 Greater Phoenix Orienteering Club
 www.gphxo.org

| | | | | | | | |
|------------------|--|-----------------------|--|------------------------|--|-----------------------|--|
| Contour Lines | | Lake, River | | Footpath | | Crossing Point | |
| Earth Bank | | Wash, Small Wash | | Small Footpath | | Solid Building | |
| Small Earth Wall | | Open Land | | Less Distinct Footpath | | Pass-through Building | |
| Gully, Ditch | | Scattered Trees | | Bridge, Tunnel | | Out-of-bounds Area | |
| Knoll | | Vegetation | | Power Line | | Paved Areas | |
| Rock Face | | Thick Vegetation | | Passable Wall | | Road, Vehicle Track | |
| Boulder | | Vegetation Edge | | Impassable Wall | | Man-made Objects | |
| Stoney Ground | | Prominent Tree/Cactus | | Fence | | Pit, Depression | |

Base Maps: USGS Granite Reef Quad: Granite Reef SW DOQQ
 Cartography: OCAD (TM)
 2003-2004: P. Abbott
 2005-2010: F. Brown
 Field Work:
 2003-2004: P. Abbott, M. Dixon, M. Franklin
 2005-2010: F. Brown
 2011-2012: G. Hickey

Safety Bearing: South (180°) to
 Bush Highway or Phon D Sutton Road

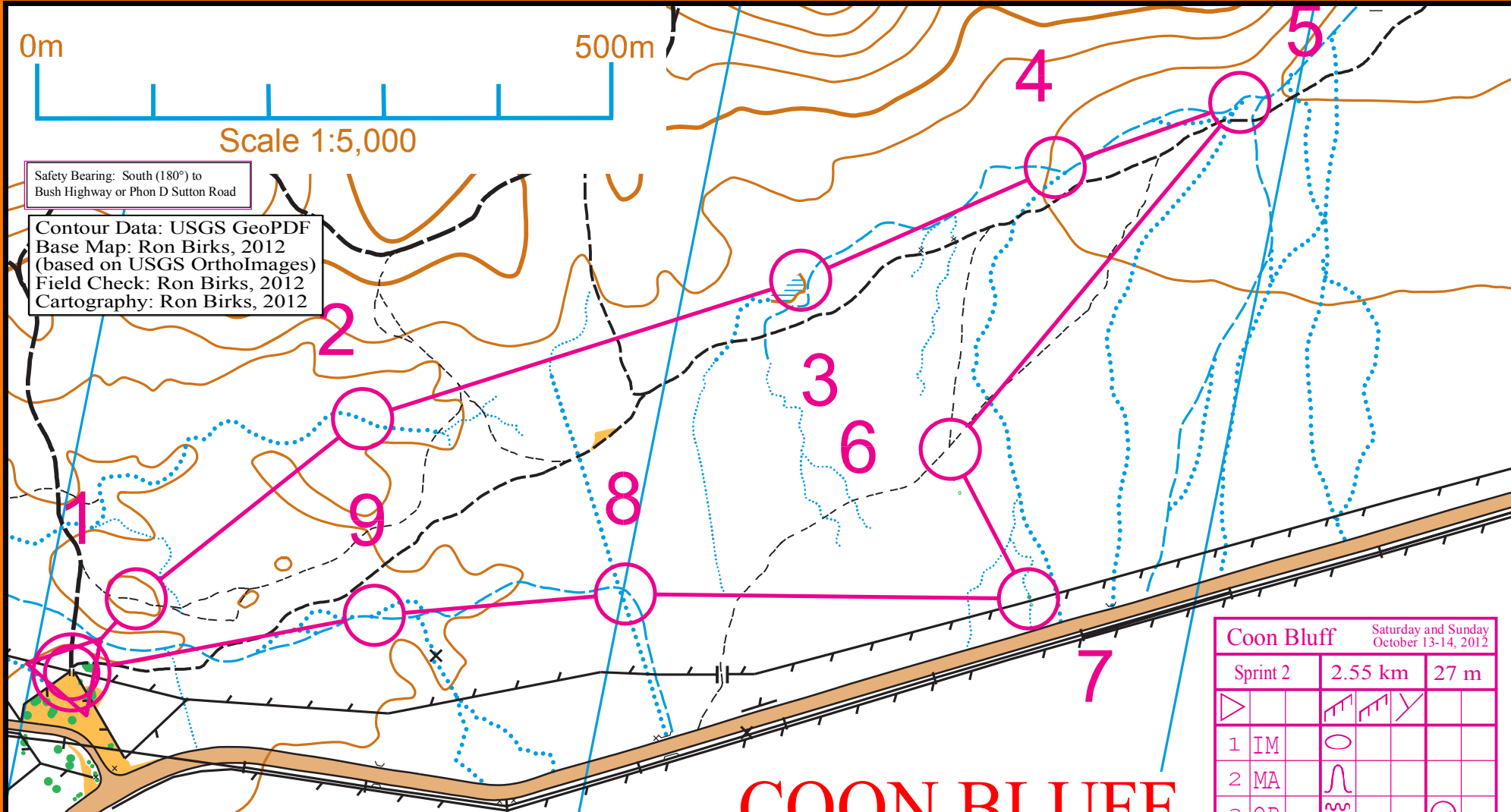


0m 500m

Scale 1:5,000

Safety Bearing: South (180°) to Bush Highway or Phon D Sutton Road

Contour Data: USGS GeoPDF
 Base Map: Ron Birks, 2012
 (based on USGS OrthoImages)
 Field Check: Ron Birks, 2012
 Cartography: Ron Birks, 2012



Contour Interval: 20 feet
 Declination: 11.6° East
 Scale: 1:5,000

©2012 Greater Phoenix Orienteering Club
 www.gphxo.org



COON BLUFF

Sprint 2

Saturday, October 13, 2012

| Coon Bluff | | Saturday and Sunday October 13-14, 2012 | |
|------------|---------|--|---|
| Sprint 2 | 2.55 km | 27 m | |
| ▶ | ⚡ ⚡ ⚡ | | |
| 1 IM | ○ | | |
| 2 MA | ⌒ | | |
| 3 OP | ⌒ | | ○ |
| 4 PQ | ⌒ ⌒ ⚡ | | |
| 5 JA | ⌒ | | |
| 6 RA | / / ⚡ | | |
| 7 EC | ⚡ ⌒ ⚡ | | |
| 8 BK | ⚡ ⚡ | | < |
| 9 SW | ⚡ ⌒ ⚡ | | |
| 10 | | | |
| | | 273 m | |

| | | | |
|------------------|--|-----------------------|--|
| Contour Lines | | Lake, River | |
| Earth Bank | | Wash, Small Wash | |
| Small Earth Wall | | Open Land | |
| Gully, Ditch | | Scattered Trees | |
| Knoll | | Vegetation | |
| Rock Face | | Thick Vegetation | |
| Boulder | | Vegetation Edge | |
| Stoney Ground | | Prominent Tree/Cactus | |

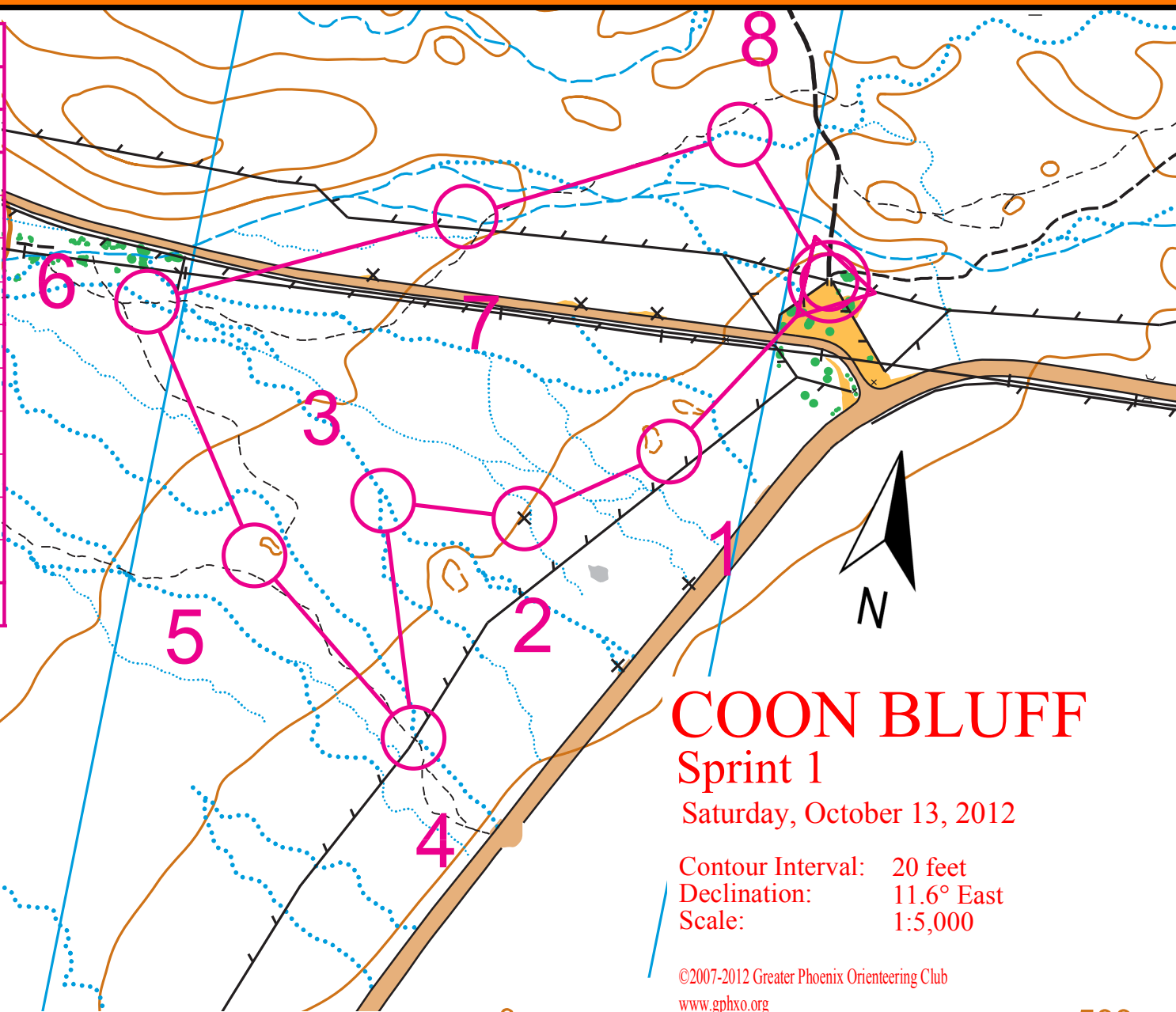
| | | | |
|------------------------|--|-----------------------|--|
| Footpath | | Crossing Point | |
| Small Footpath | | Solid Building | |
| Less Distinct Footpath | | Pass-through Building | |
| Bridge, Tunnel | | Out-of-bounds Area | |
| Power Line | | Paved Areas | |
| Passable Wall | | Road, Vehicle Track | |
| Impassable Wall | | Man-made Objects | |
| Fence | | Pit, Depression | |

| | |
|-----------------------|--|
| Solid Building | |
| Pass-through Building | |
| Out-of-bounds Area | |
| Paved Areas | |
| Road, Vehicle Track | |
| Man-made Objects | |
| Pit, Depression | |

Coon Bluff

Saturday and Sunday
October 13-14, 2012

| Sprint 1 | | 1.69 km | 20 m |
|----------|----|---------|------|
| 1 | HT | | |
| 2 | QR | | |
| 3 | KK | | |
| 4 | JS | | |
| 5 | KB | | |
| 6 | RL | | |
| 7 | RD | | |
| 8 | AK | | |
| 9 | | | |
| 10 | | | |



COON BLUFF

Sprint 1

Saturday, October 13, 2012

Contour Interval: 20 feet
Declination: 11.6° East
Scale: 1:5,000

©2007-2012 Greater Phoenix Orienteering Club
www.gphxo.org

Safety Bearing: South (180°) to
Bush Highway or Phon D Sutton Road

Contour Data: USGS GeoPDF
Base Map: Ron Birks, 2012
(based on USGS OrthoImages)
Field Check: Ron Birks, 2012
Cartography: Ron Birks, 2012

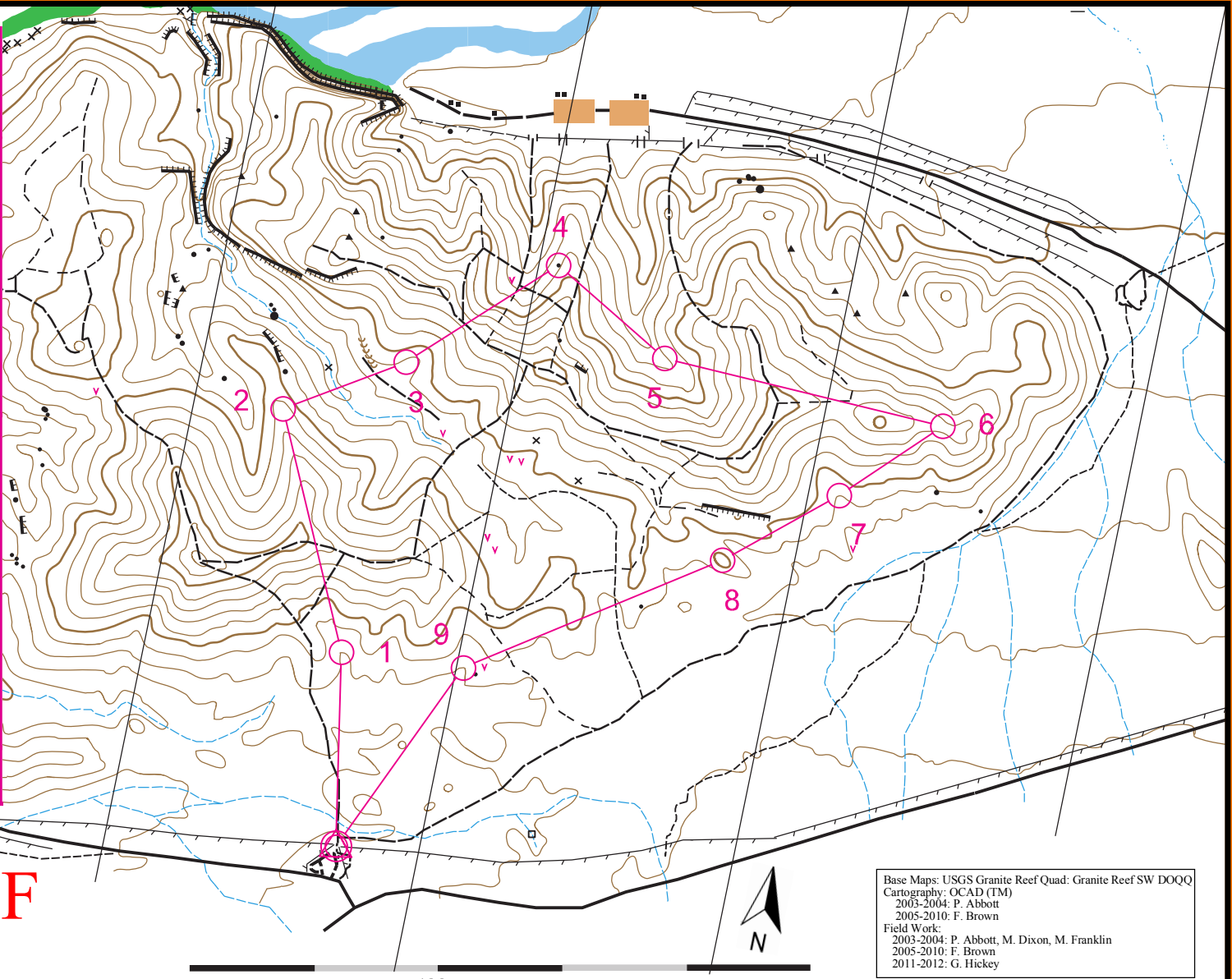
| | | | | | | | |
|------------------|--|-----------------------|--|------------------------|--|-----------------------|--|
| Contour Lines | | Lake, River | | Footpath | | Crossing Point | |
| Earth Bank | | Wash, Small Wash | | Small Footpath | | Solid Building | |
| Small Earth Wall | | Open Land | | Less Distinct Footpath | | Pass-through Building | |
| Gully, Ditch | | Scattered Trees | | Bridge, Tunnel | | Out-of-bounds Area | |
| Knoll | | Vegetation | | Power Line | | Paved Areas | |
| Rock Face | | Thick Vegetation | | Passable Wall | | Road, Vehicle Track | |
| Boulder | | Vegetation Edge | | Impassable Wall | | Man-made Objects | |
| Stoney Ground | | Prominent Tree/Cactus | | Fence | | Pit, Depression | |



Coon Bluff

Saturday and Sunday
October 13-14, 2012

| | | | |
|---------|----|---------|-------|
| Night-0 | | 3.13 km | 160 m |
| ▷ | | ▩ ▩ ▩ | |
| 1 | VE | ∩ | |
| 2 | RM | ∩ | |
| 3 | NM | ∩ | |
| 4 | CG | ▲ | 1.5 ○ |
| 5 | FB | ∩ | |
| 6 | PM |) (| |
| 7 | IB | ∩ | |
| 8 | JP | ○ | |
| 9 | CX | ∩ | |
| 10 | | | |
| ○ | < | 273 m | >○ |



COON BLUFF Night-O

Saturday, October 13, 2012

Contour Interval: 20 feet
Declination: 11.6° East
Scale: 1:10,000

©2007-2012 Greater Phoenix Orienteering Club
www.gphxo.org

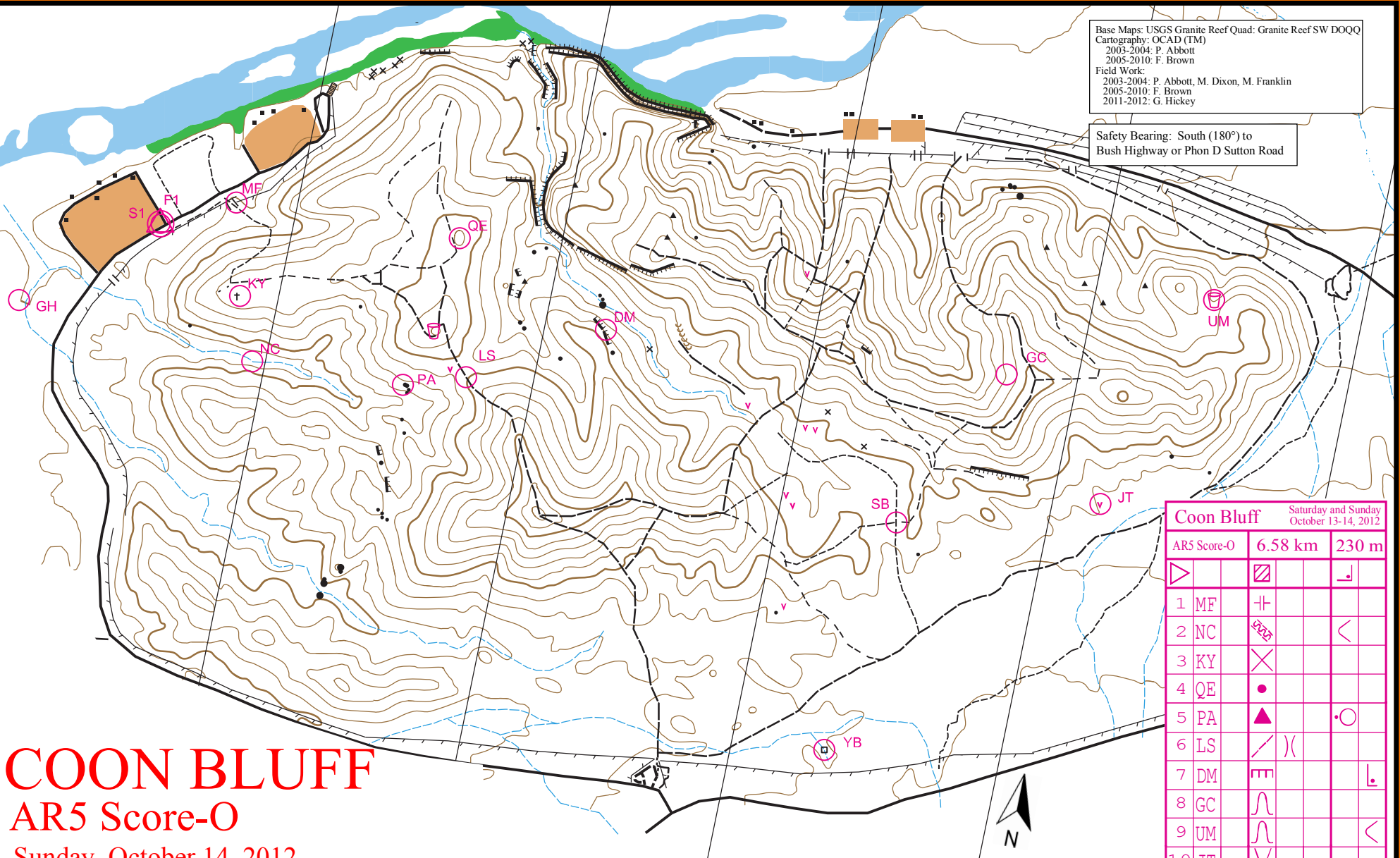
Base Maps: USGS Granite Reef Quad: Granite Reef SW DOQQ
Cartography: OCAD (TM)
2003-2004: P. Abbott
2005-2010: F. Brown
Field Work:
2003-2004: P. Abbott, M. Dixon, M. Franklin
2005-2010: F. Brown
2011-2012: G. Hickey

Safety Bearing: South (180°) to
Bush Highway or Phon D Sutton Road

| | | | | | | | |
|------------------|--|-----------------------|--|------------------------|--|-----------------------|--|
| Contour Lines | | Lake, River | | Footpath | | Crossing Point | |
| Earth Bank | | Wash, Small Wash | | Small Footpath | | Solid Building | |
| Small Earth Wall | | Open Land | | Less Distinct Footpath | | Pass-through Building | |
| Gully, Ditch | | Scattered Trees | | Bridge, Tunnel | | Out-of-bounds Area | |
| Knoll | | Vegetation | | Power Line | | Paved Areas | |
| Rock Face | | Thick Vegetation | | Passable Wall | | Road, Vehicle Track | |
| Boulder | | Vegetation Edge | | Impassable Wall | | Man-made Objects | |
| Stoney Ground | | Prominent Tree/Cactus | | Fence | | Pit, Depression | |

Base Maps: USGS Granite Reef Quad: Granite Reef SW DOQQ
 Cartography: OCAD (TM)
 2003-2004: P. Abbott
 2005-2010: F. Brown
 Field Work:
 2003-2004: P. Abbott, M. Dixon, M. Franklin
 2005-2010: F. Brown
 2011-2012: G. Hickey

Safety Bearing: South (180°) to
 Bush Highway or Phon D Sutton Road



COON BLUFF

AR5 Score-O

Sunday, October 14, 2012

Contour Interval: 20 feet
 Declination: 11.6° East
 Scale: 1:10,000

©2007-2012 Greater Phoenix Orienteering Club
 www.gphxo.org

| | | | |
|------------------|-----------------------|------------------------|-----------------------|
| Contour Lines | Lake, River | Footpath | Crossing Point |
| Earth Bank | Wash, Small Wash | Small Footpath | Solid Building |
| Small Earth Wall | Open Land | Less Distinct Footpath | Pass-through Building |
| Gully, Ditch | Scattered Trees | Bridge, Tunnel | Out-of-bounds Area |
| Knoll | Vegetation | Power Line | Paved Areas |
| Rock Face | Thick Vegetation | Passable Wall | Road, Vehicle Track |
| Boulder | Vegetation Edge | Impassable Wall | Man-made Objects |
| Stoney Ground | Prominent Tree/Cactus | Fence | Pit, Depression |

| Coon Bluff | | Saturday and Sunday October 13-14, 2012 | |
|-------------|---------|--|---|
| AR5 Score-O | 6.58 km | 230 m | |
| 1 MF | + | | |
| 2 NC | | | < |
| 3 KY | X | | |
| 4 QE | • | | |
| 5 PA | ▲ | | ○ |
| 6 LS | / |) | |
| 7 DM | | | └ |
| 8 GC | ~ | | |
| 9 UM | ~ | | < |
| 10 JT | ∇ | | |
| 11 SB | / | / | ∇ |
| 12 YB | X | | |
| 13 RS | | | ∇ |
| 14 GH | | | |
| 15 | | | |

142 m