

# Rainbow Forest

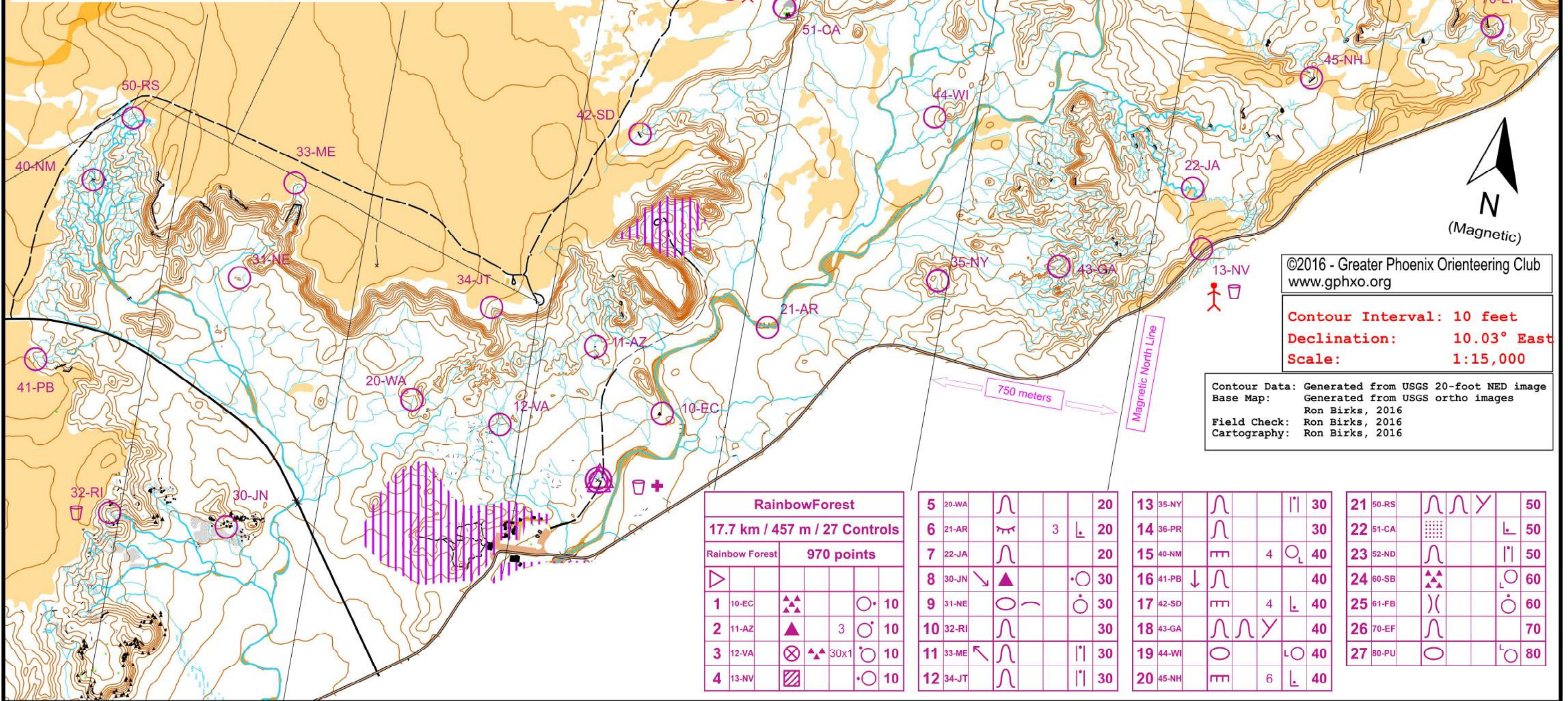
**Petrified Forest Rogaines**  
**Saturday, October 15, 2016**

## Legend

- Start
- Finish
- Control
- Out-of-Bounds
- Road
- Linear Rock Feature
- Cliff
- Watercourse
- Small Watercourse
- Minor Water Channel
- Contours
- Rough Open Land

0 500 1000 1500 2000 m

**1:15,000**



©2016 - Greater Phoenix Orienteering Club  
[www.gphxo.org](http://www.gphxo.org)

**Contour Interval: 10 feet**  
**Declination: 10.03° East**  
**Scale: 1:15,000**

Contour Data: Generated from USGS 20-foot NED image  
 Base Map: Generated from USGS ortho images  
 Ron Birks, 2016  
 Field Check: Ron Birks, 2016  
 Cartography: Ron Birks, 2016

RainbowForest			
17.7 km / 457 m / 27 Controls			
Rainbow Forest	970 points		
1	10-EC		10
2	11-AZ		10
3	12-VA		10
4	13-NV		10

5	20-WA		20
6	21-AR		20
7	22-JA		20
8	30-JN		30
9	31-NE		30
10	32-RI		30
11	33-ME		30
12	34-JT		30

13	35-NY		30
14	36-PR		30
15	40-NM		40
16	41-PB		40
17	42-SD		40
18	43-GA		40
19	44-WI		40
20	45-NH		40

21	50-RS		50
22	51-CA		50
23	52-ND		50
24	60-SB		60
25	61-FB		60
26	70-EF		70
27	80-PU		80