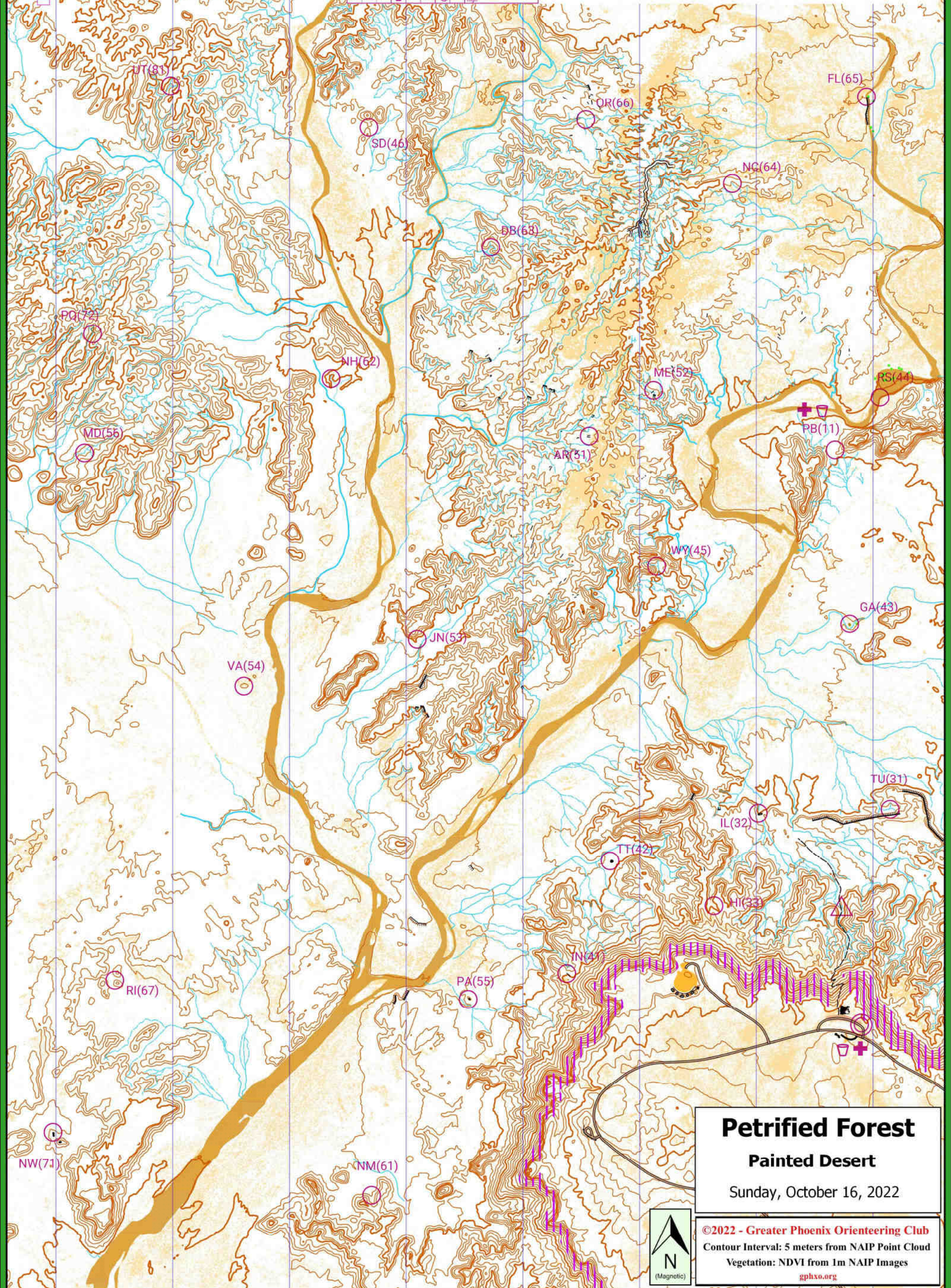


20221016 Painted Desert				
1280 Points/26 Controls				
20.9km/734m				
Sunday				
Start:				
11 PB	(+
31 TU)			
32 IL]			
33 HI	→			
41 IN	⊗	▲	15	
42 TT	▲		6	

43 GA	△				N side of lone tree
44 RS	⌒				W edge of earth bank
45 WY	∩				Reentrant
46 SD)				Saddle
51 AR	⊗	⊗	12		Between root stocks, 12m high
52 ME	⊗	▲			NE side of rocky root stock
53 JN	∩		4		NE foot of spur, 4m high
54 VA	⊗	⊗			Hill and thicket
55 PA	▲		8		W foot of rock pillar, 8m high
56 MD	∩				Reentrant

61 NM	∩				Reentrant
62 NH	∩				Reentrant
63 DB	∩	∩	Y		Reentrant junction
64 NC	∩				Reentrant
65 FL	∩		4	T	N end of cliff, 4m high
66 OR	∩	∩	Y		Reentrant junction
67 RI	∩	⊗	6		NW foot of SW hill, 6m high
71 NW	∩	⊗	4		NW foot of boulder, 4m high
72 PQ	∩	∩	Y		Reentrant junction
81 UT	∩	∩	Y		Reentrant junction



Petrified Forest
Painted Desert
 Sunday, October 16, 2022

©2022 - Greater Phoenix Orienteering Club
 Contour Interval: 5 meters from NAIP Point Cloud
 Vegetation: NDVI from 1m NAIP Images
gphxo.org

