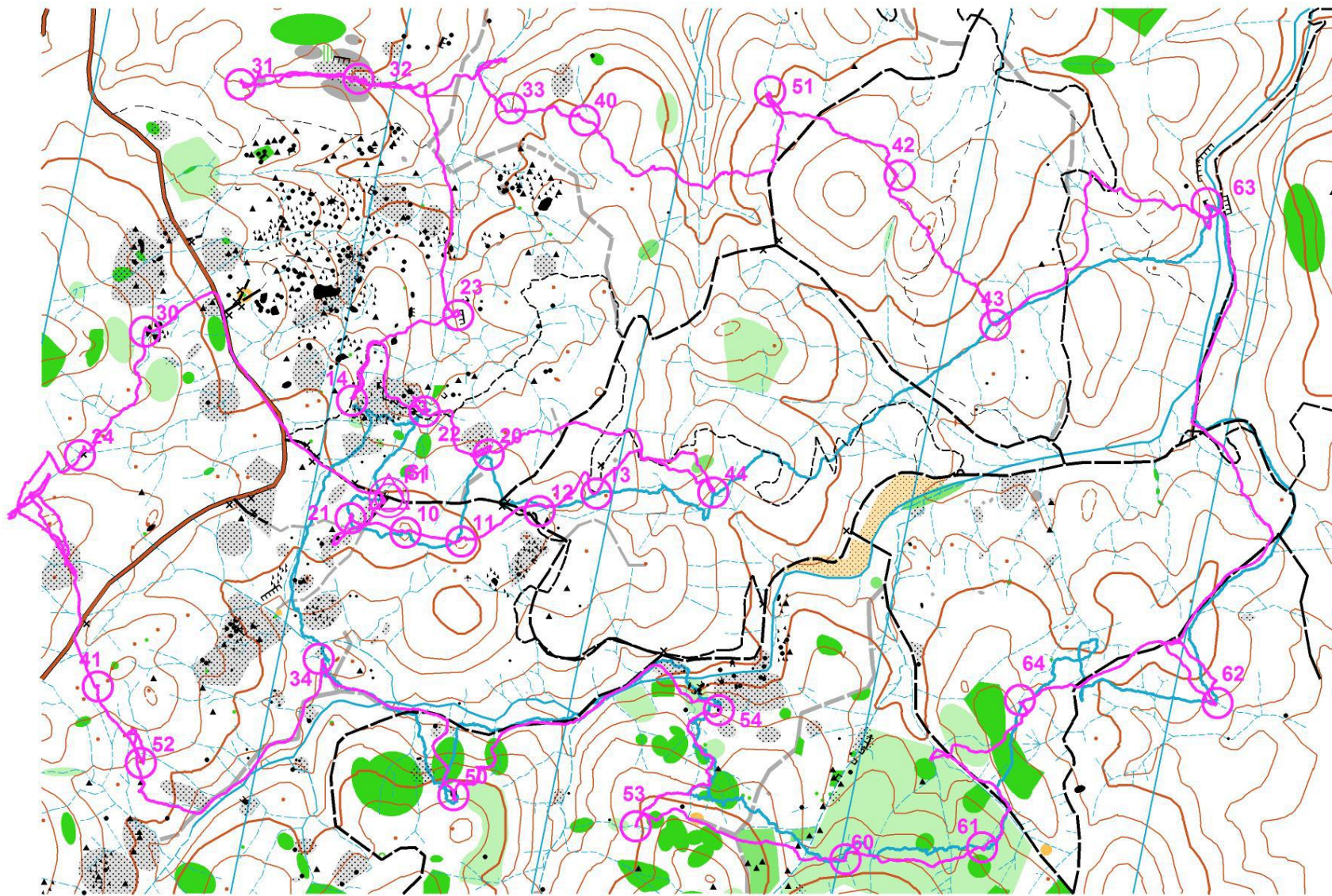


**Erik 7.4 miles
2:59 hours**





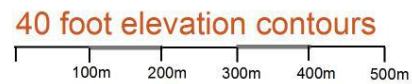
Thumb Butte score-O 2015-05-09

All controls	30 controls			
▷	◁	⊕	⊗	
10	○			
11	○			
12	∩	∩		
13	∩		<	
14	∩			
20	∩	∩		
21	▲	2m	○	
22	∩		∩	
23	∩	2m	∩	
24	∩	∩	∩	
30	←	▲	2m	∩
31	∩			
32	∩			
33	∩			
34	∩		∩	
40	▲	2m	○	
41	∩	•		∩
42	∩			∩
43	∩			∩
44	∩			∩
50	▲	2.5m	○	
51	∩			
52	•			
53	∩			
54	▲	2m	○	
60	∩			
61	←	∩		
62	∩			
63	∩	2.5m	∩	∩
64	∩			

- Contour Line
- Index Contour
- Form Line (intermediate contour)
- Graded Road
- Vehicle Track (Double-track)
- Footpath (single-track)
- Indistinct Vehicle Track
- Indistinct Footpath
- Minor Water Channel
- Seasonal Stream

- Large Boulder (>3-m)
- Boulder (>2-m)
- ▲ Boulder Cluster
- ▲ Boulder Field
- ▨ Open Boulder Field
- ▬ Cliff
- Knoll
- Fenceline
- × Man-made Object

- Slow Running
- Thick Vegetation (thorns)
- Open area



1:10,000 scale



Magnetic Declination
11.0 degrees (2014)

— Magnetic North Lines

Thumb Butte May 9, 2015

Greater Phoenix Orienteering gphxo.org