

# Papago Park

## Orienteering Course



### Papago Park Orienteering

Papago Park's orienteering course is located south of the archery range in the Papago Sports Complex. Ten control locations are spread out along the ~1.5 km course.

Orienteering is a form of land navigation in which participants use a map and compass to navigate through a variety of terrains. The course is geared toward the beginner and is open from sunrise to sunset daily. For more information please call the Papago Park Ranger Office: (602) 261-8318. The Greater Phoenix Orienteering Club has additional information about orienteering on their website at <http://gphxo.org>.

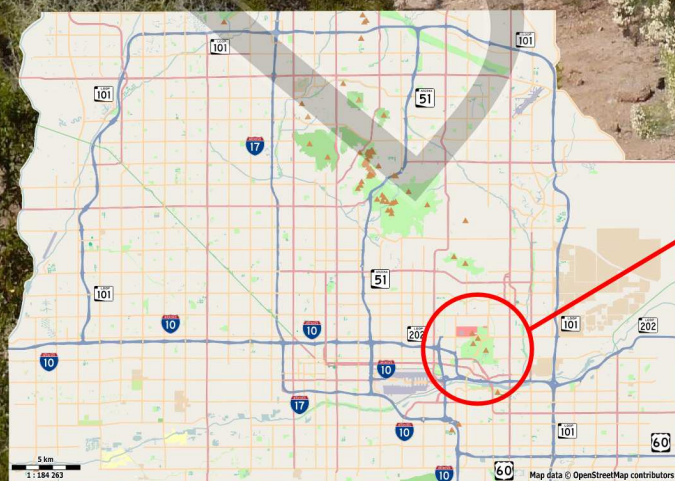
### Directions

Papago Sports Complex  
6201 E. Oak Street

From the intersection of McDowell Road and 64th Street:

1. Travel north on 64th Street to Oak Street.
2. Travel west on Oak Street to the park entrance.
3. Travel south to the entrance of the archery range.
4. The orienteering course starts just south of the archery range.

Orienteering  
Marker



# Papago Orienteering Course

		1.5 km	25 m	
▷				Start:
1	CO			Road and path junction
2	TT			Shallow ditch
3	PA			Bend in ditch
4	DG			Shallow ditch
5	MF			Path and ditch junction
6	PN			S outside corner of fence
7	LS			Ditch and reentrant junction
8	PM			SE outside corner of fence
9	CB			Bend in ditch
10	BW			Reentrant junction
⊗		70 m	⊗	Navigate 70 m to finish

Oak Street

150 meters

Magnetic North Line

Archery Range :

## Papago Orienteering Course

Contour Interval: 10 feet  
Declination: 10.5° East  
Scale: 1:3,000

©2014 - Greater Phoenix Orienteering Club  
[www.gphxo.org](http://www.gphxo.org)

Contour Lines	
Gully, Ditch	
Wash, Small Wash	
Open Land, Sport Area	
Vegetation	
Prominent Cactus	
Dry depression	
Man-made Objects	
Building	
Major, Minor Road	
Footpath	
Smaller Footpaths	
Power Line	
Small Tunnel	
Fence	
Out-of-bounds Area	

0m 1:3000 150m

McDowell Road