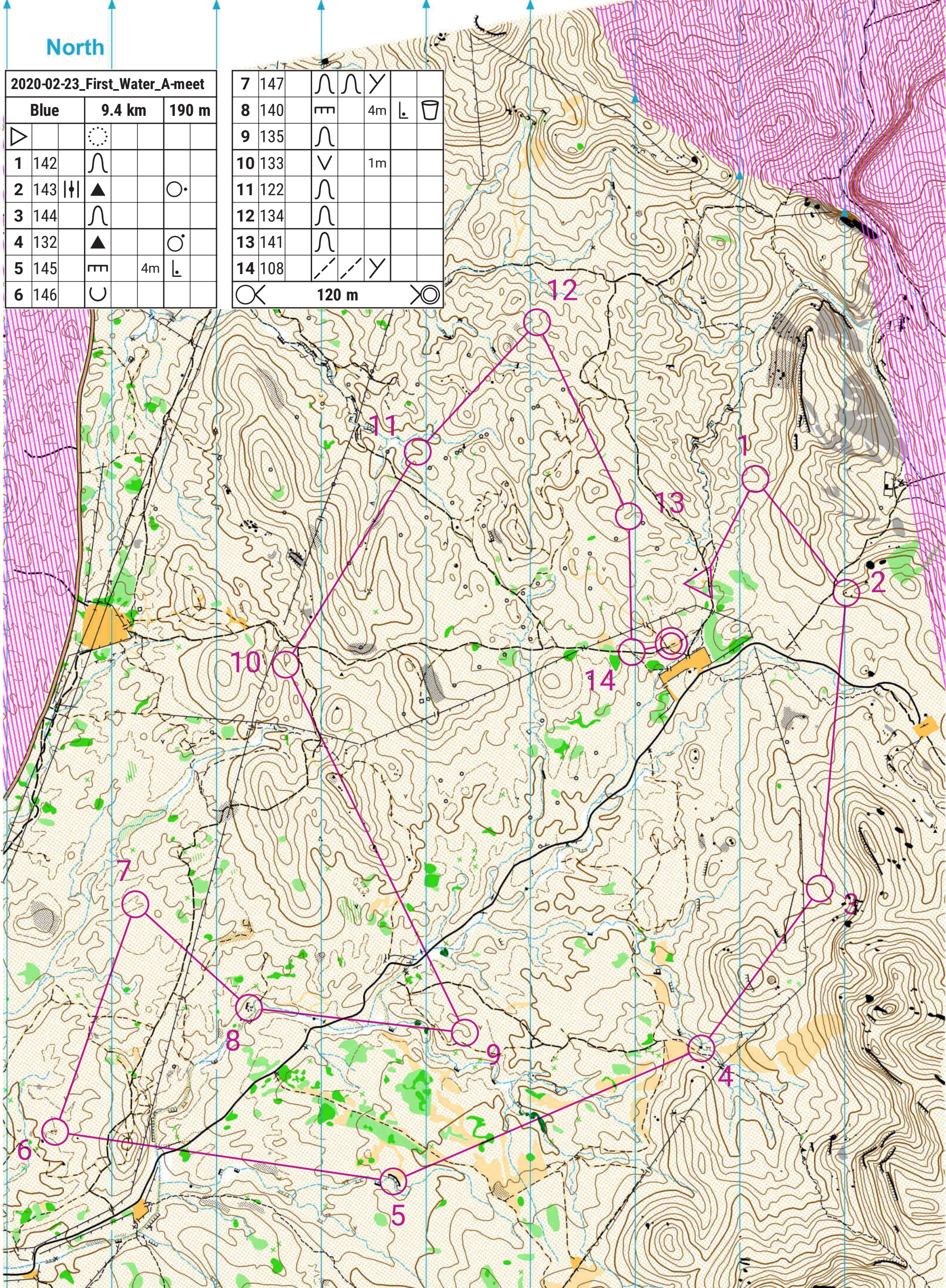


North

2020-02-23_First_Water_A-meet

Blue	9.4 km	190 m
1 142		
2 143		
3 144		
4 132		
5 145	4m	
6 146		

7	147					
8	140			4m		
9	135					
10	133			1m		
11	122					
12	134					
13	141					
14	108					
		120 m				



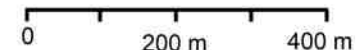
First Water - Feb. 23, 2020

- Contour lines
- Index contour
- Form Lines
- Earth banks, Earth wall
- Small gully, ditch, or re-entrant
- Knolls (round, elongated), Pit
- Cliffs, Rock pillar
- Rock faces
- Stony ground (slow, walk)
- Boulders, Boulder cluster
- Boulder group
- Open sandy ground
- Bare Rock
- Water channel / seasonal stream
- Open area
- Rough open land
- Rough semi-open land (scattered trees)
- Cholla cactus (slow, walk)
- Vegetation - impassable
- Undergrowth (slow, walk)
- Cactus patch, prominent Saguaro cactus

- Roads (paved, gravel, active jeep trail)
- Old jeep roads (active trail, visible grade, indistinct)
- Trails (footpath, indistinct)
- Power line, Ruined wall
- Paved area, Grave
- Fence, Ruined fence
- Crossing Point
- Building (large, small)
- Ruin (large, small)
- Rock pile, Cairn, or Monument
- Rocky pit (mine), Cave, Man-made feature
- Out-of-bounds area

Greater Phoenix Orienteering
gphxo.org

20 Foot Contour Interval Scale 1:10,000



Safety Bearing: 270 degrees to Highway 88 (paved)