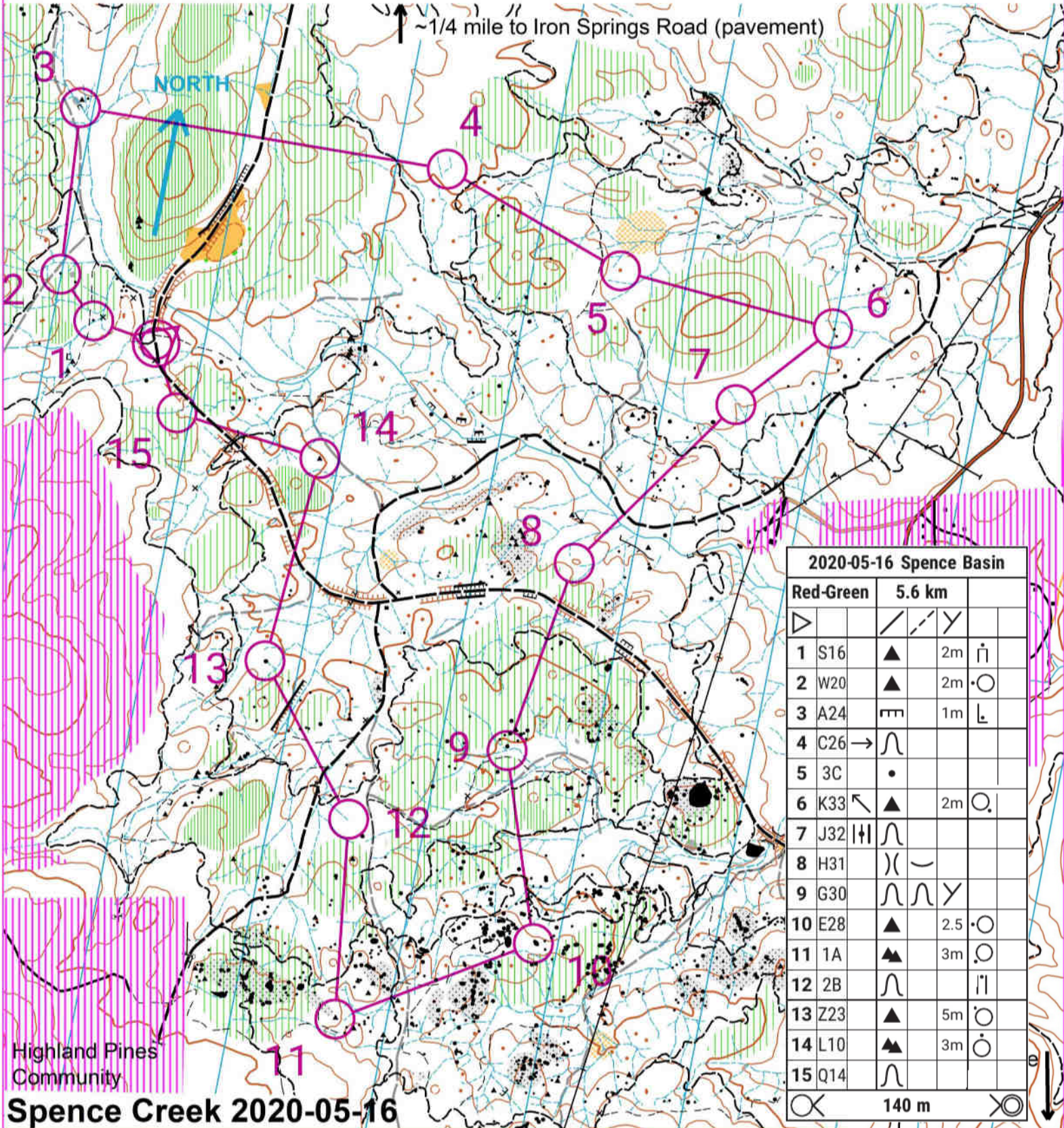
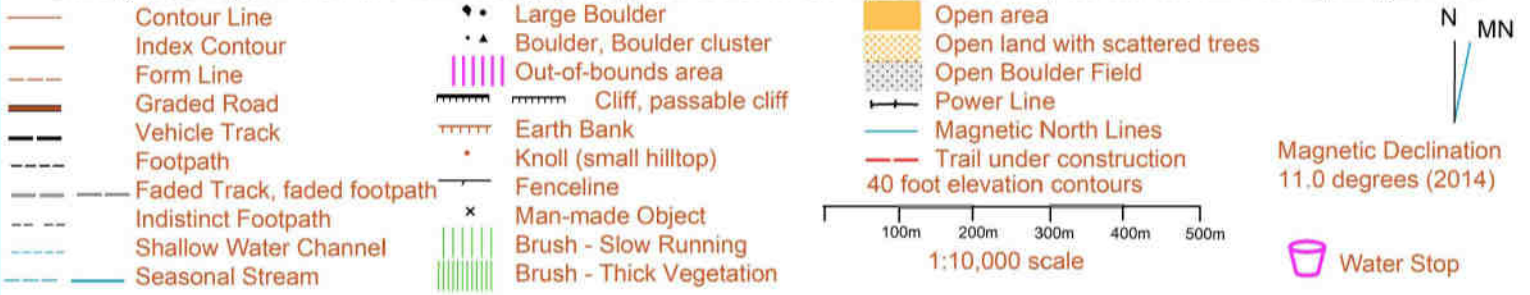


Safety bearing: North to Railroad grade (then west to start) or North to pavement on Iron Springs road



2020-05-16 Spence Basin			
Red-Green		5.6 km	
1	S16	▲	2m
2	W20	▲	2m
3	A24	▬	1m
4	C26	→	
5	3C	•	
6	K33	↖	2m
7	J32	▬	
8	H31	∪	
9	G30	∪	
10	E28	▲	2.5
11	1A	▲	3m
12	2B	∪	
13	Z23	▲	5m
14	L10	▲	3m
15	Q14	∪	

140 m