

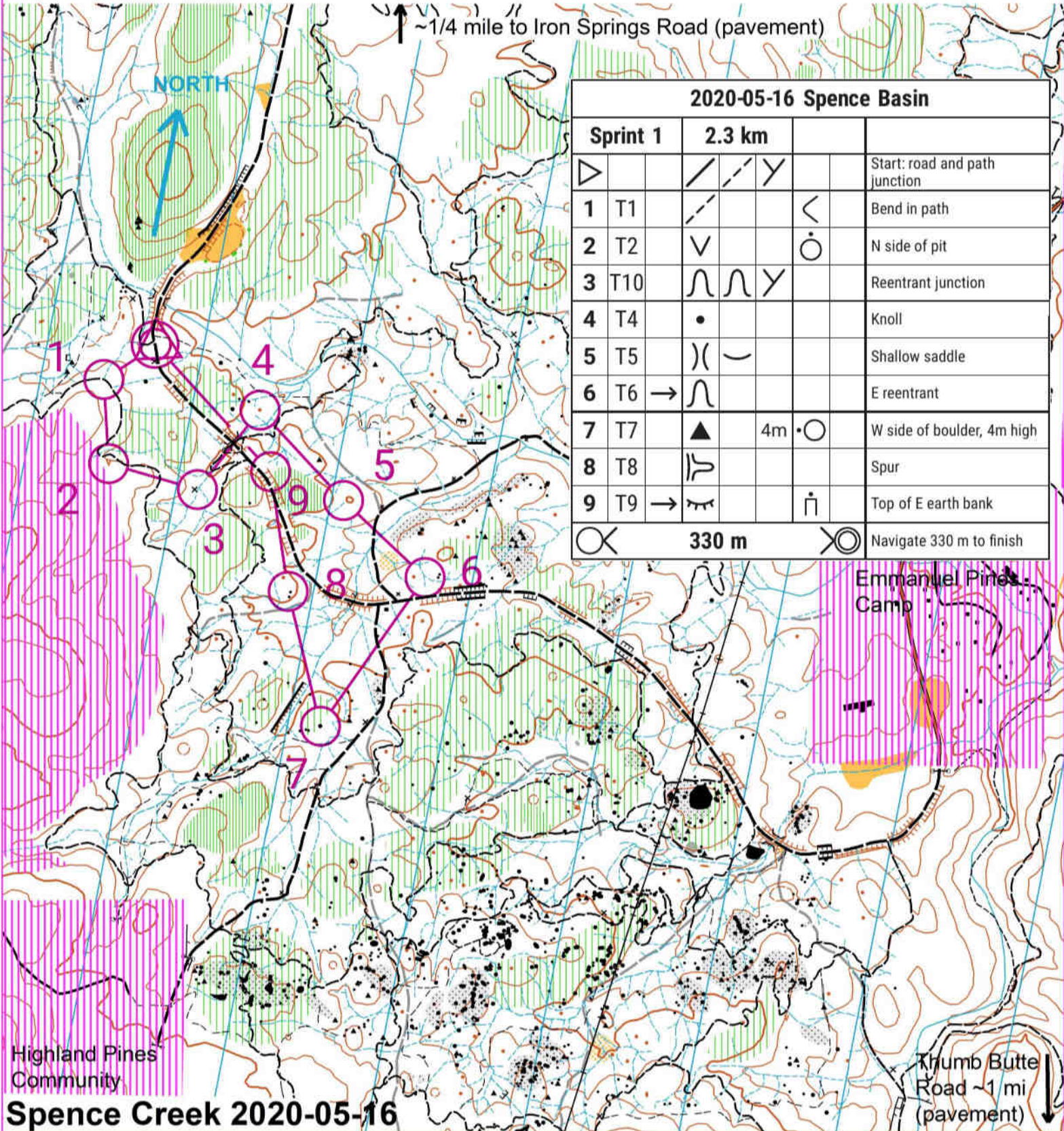
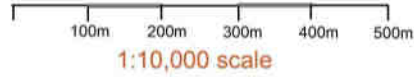
Safety bearing: North to Railroad grade (then west to start) or North to pavement on Iron Springs road

- Contour Line
- Index Contour
- Form Line
- Graded Road
- Vehicle Track
- Footpath
- Faded Track, faded footpath
- Indistinct Footpath
- Shallow Water Channel
- Seasonal Stream
- Large Boulder
- Boulder, Boulder cluster
- Out-of-bounds area
- Cliff, passable cliff
- Earth Bank
- Knoll (small hilltop)
- Fenceline
- Man-made Object
- Brush - Slow Running
- Brush - Thick Vegetation

- Open area
- Open land with scattered trees
- Open Boulder Field
- Power Line
- Magnetic North Lines
- Trail under construction
- 40 foot elevation contours



Magnetic Declination  
11.0 degrees (2014)



2020-05-16 Spence Basin				
Sprint 1		2.3 km		
				Start: road and path junction
1	T1			Bend in path
2	T2			N side of pit
3	T10			Reentrant junction
4	T4			Knoll
5	T5			Shallow saddle
6	T6			E reentrant
7	T7		4m	W side of boulder, 4m high
8	T8			Spur
9	T9			Top of E earth bank
		330 m		Navigate 330 m to finish

Highland Pines  
Community

Spence Creek 2020-05-16

Thumb Butte  
Road ~1 mi  
(pavement)