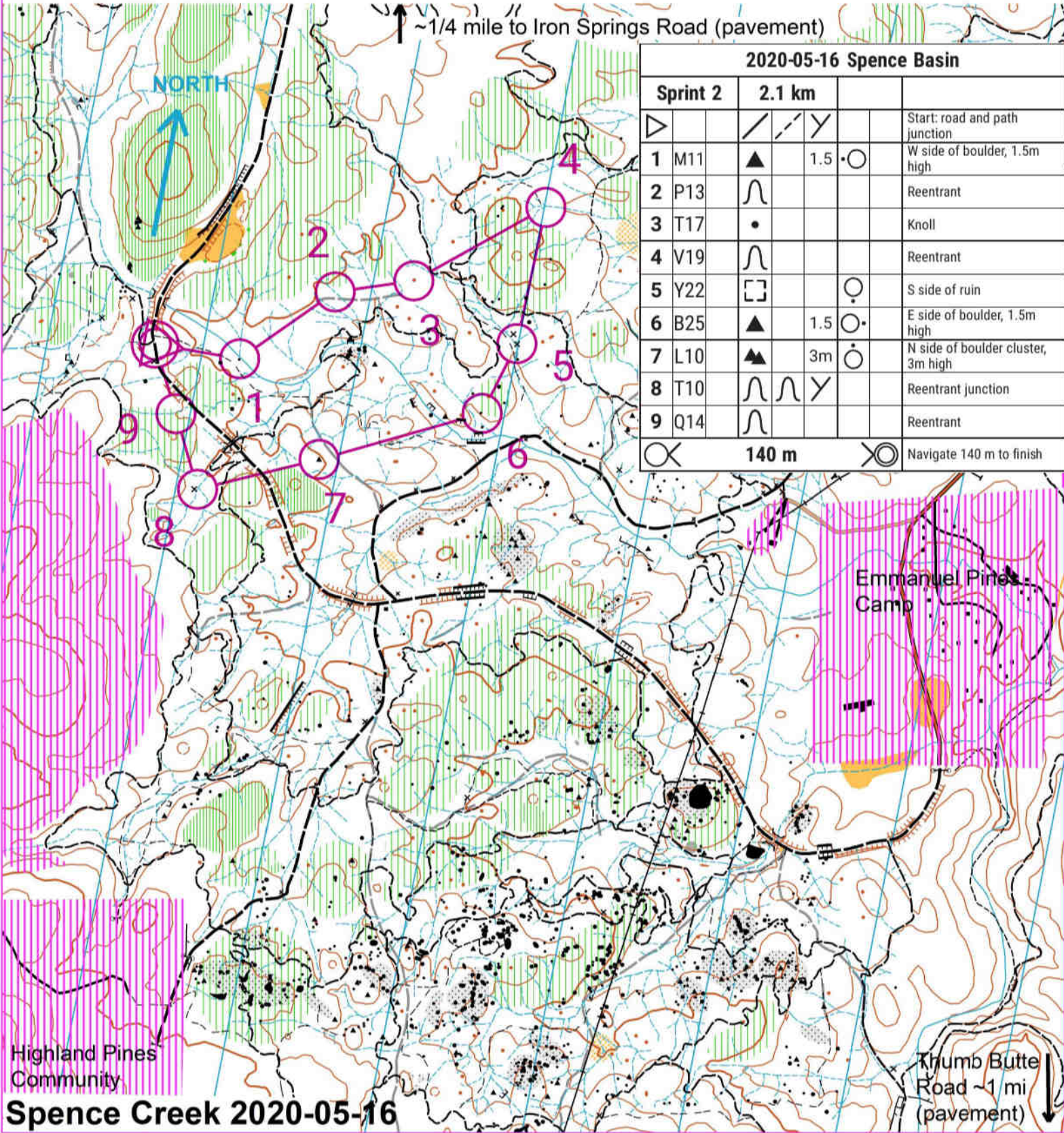
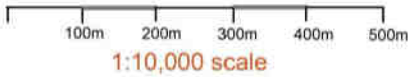


Safety bearing: North to Railroad grade (then west to start) or North to pavement on Iron Springs road

- Contour Line
- Index Contour
- Form Line
- Graded Road
- Vehicle Track
- Footpath
- Faded Track, faded footpath
- Indistinct Footpath
- Shallow Water Channel
- Seasonal Stream
- Large Boulder
- Boulder, Boulder cluster
- Out-of-bounds area
- Cliff, passable cliff
- Earth Bank
- Knoll (small hilltop)
- Fenceline
- Man-made Object
- Brush - Slow Running
- Brush - Thick Vegetation
- Open area
- Open land with scattered trees
- Open Boulder Field
- Power Line
- Magnetic North Lines
- Trail under construction
- 40 foot elevation contours



Magnetic Declination  
11.0 degrees (2014)



**2020-05-16 Spence Basin**

Sprint 2		2.1 km		
				Start: road and path junction
1	M11		1.5	
2	P13			Reentrant
3	T17			Knoll
4	V19			Reentrant
5	Y22			
6	B25		1.5	
7	L10		3m	
8	T10			Reentrant junction
9	Q14			Reentrant
			140 m	
				Navigate 140 m to finish

Highland Pines  
Community

**Spence Creek 2020-05-16**

Emmanuel Pines  
Camp

Thumb Butte  
Road ~1 mi  
(pavement)