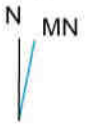


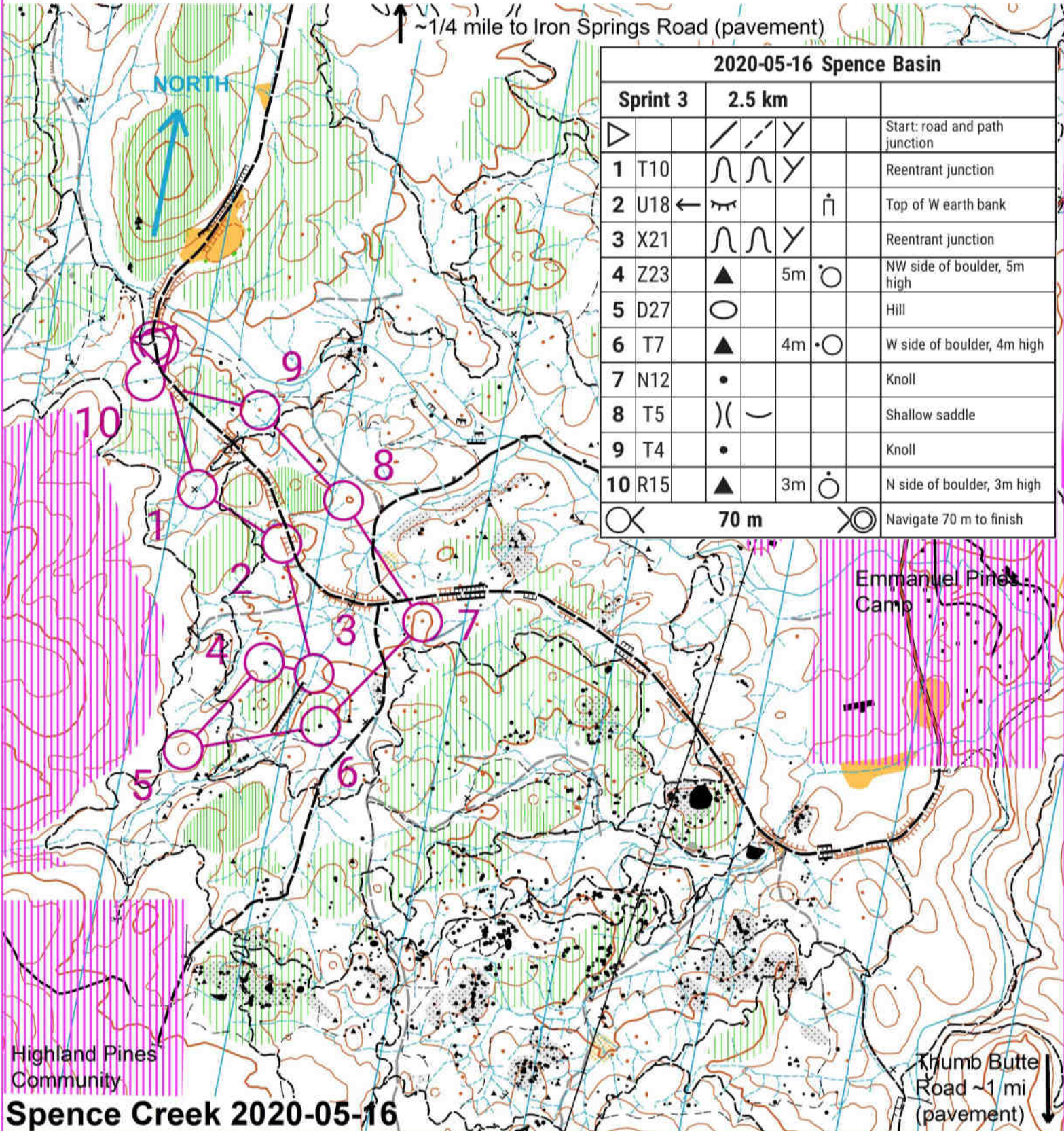
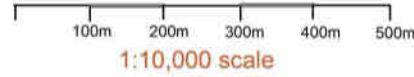
Safety bearing: North to Railroad grade (then west to start) or North to pavement on Iron Springs road

- Contour Line
- Index Contour
- - - Form Line
- Graded Road
- Vehicle Track
- Footpath
- - - Faded Track, faded footpath
- - - Indistinct Footpath
- - - Shallow Water Channel
- Seasonal Stream
- Large Boulder
- ▲ Boulder, Boulder cluster
- ||||| Out-of-bounds area
- ▬▬▬▬ Cliff, passable cliff
- ▬▬▬▬ Earth Bank
- Knoll (small hilltop)
- - - Fenceline
- x Man-made Object
- ||||| Brush - Slow Running
- ||||| Brush - Thick Vegetation

- Open area
- Open land with scattered trees
- Open Boulder Field
- Power Line
- Magnetic North Lines
- Trail under construction
- 40 foot elevation contours



Magnetic Declination  
11.0 degrees (2014)



↑ ~1/4 mile to Iron Springs Road (pavement)

**2020-05-16 Spence Basin**

Sprint 3	2.5 km			
▷	↙ ↘		Start: road and path junction	
1 T10	∩ ∪	↘	Reentrant junction	
2 U18	←	⌒	Top of W earth bank	
3 X21	∩ ∪	↘	Reentrant junction	
4 Z23	▲	5m	○	NW side of boulder, 5m high
5 D27	○			Hill
6 T7	▲	4m	•○	W side of boulder, 4m high
7 N12	•			Knoll
8 T5	) (	—		Shallow saddle
9 T4	•			Knoll
10 R15	▲	3m	○	N side of boulder, 3m high
⊗	70 m	⊗	Navigate 70 m to finish	

Emmanuel Pines Camp

Thumb Butte Road ~1 mi (pavement)

Highland Pines Community

**Spence Creek 2020-05-16**