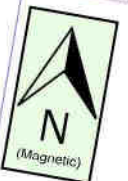


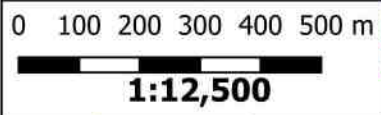
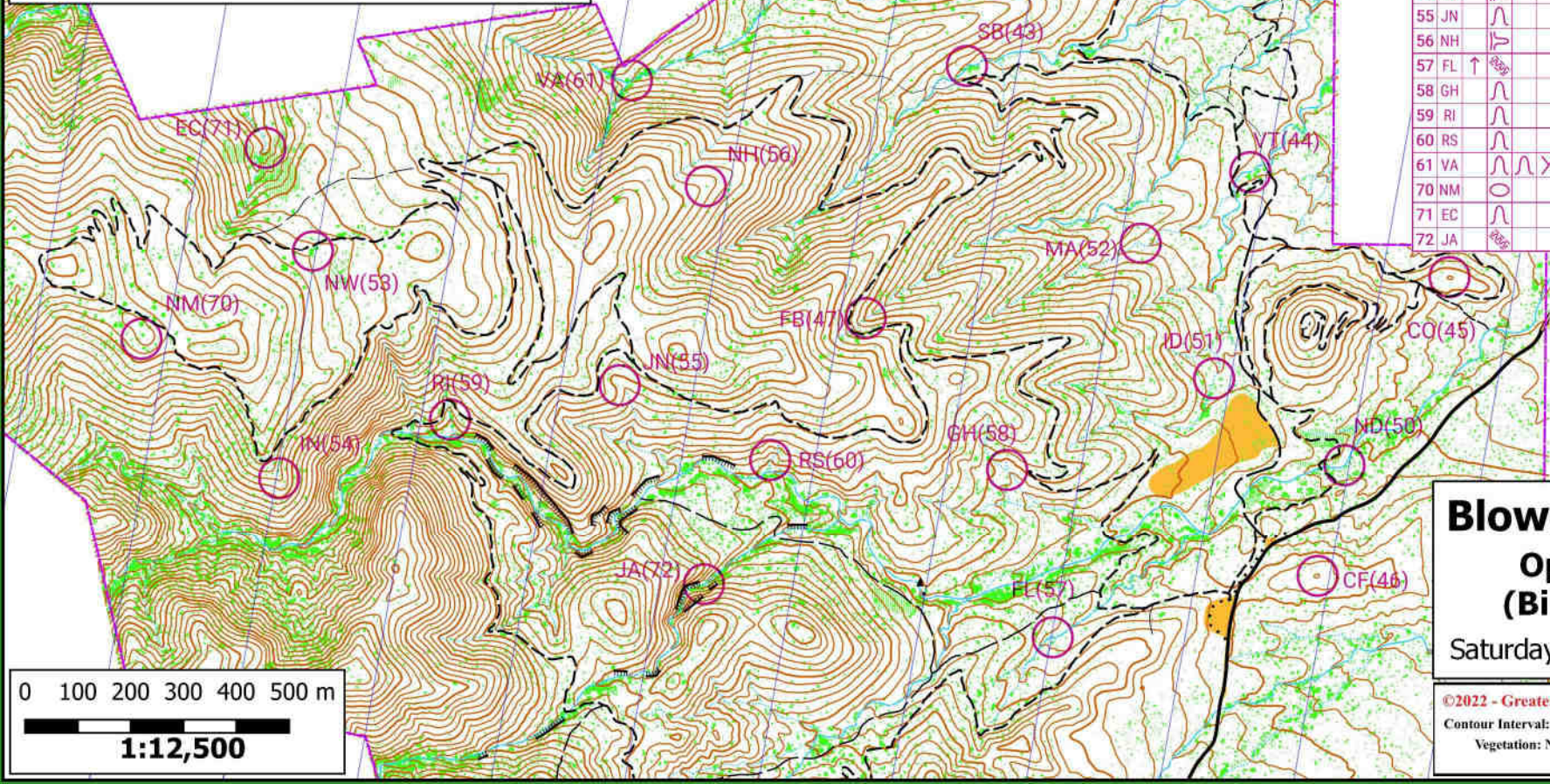
# Legend

- Controls
- 420.1 Medium Tree
- 206.1 Medium-Sized Boulder
- 209.0 Boulder Cluster
- ▲ 209.1 Large Boulder Cluster
- National Forest Boundary
- Tunnel
- Stone Wall
- ⋯ Boulder Border
- Fence
- High Fence
- Crossing Point
- Minor Road
- Road
- Vehicle Track 1
- Vehicle Track 2
- Bikepath
- Footpath
- Small Path
- Less Distinct Small Path
- ▬ Impassable Cliff
- Crossable Small Watercourse
- Minor Water Channel
- Narrow Marsh
- Contours (5m)
- Index Contours (25m)
- Small Erosion Gully
- Building
- Canopy
- Open Land
- Paved Area
- Undergrowth - Difficult to Run
- Dense Vegetation



500 meters  
200 meters  
Magnetic North Line

Blowout Creek			
10.5km/638m			
26 controls/1240 points			
Open Nav			
▶	Π		Start: Canopy
30 SW	∩		Reentrant
31 SE	∩		Reentrant
32 AL	△	♀	S side of lone tree
40 JP	∩		Stream
41 GS	∩		Stream
42 UT	∩		Shallow reentrant
43 SB	∩		Stream
44 VT	∩		Stream
45 CO	○	○	W side of hill
46 CF	○	○	N side of hill
47 FB	∩		Reentrant
50 ND	△	7 ○	W side of lone tree, 7m high
51 ID	∩		Reentrant
52 MA	∩		Reentrant
53 NW	△	○	SE side of NW lone tree
54 IN	∩		Spur
55 JN	∩		Reentrant
56 NH	∩		Spur
57 FL	↑		N stream
58 GH	∩		Reentrant
59 RI	∩		Reentrant
60 RS	∩		Reentrant
61 VA	∩ ∩ Y		Reentrant junction
70 NM	○	♀	S side of hill
71 EC	∩		Reentrant
72 JA	∩		Stream



**Blowout Creek**  
**Open Nav**  
**(Bike, Foot)**  
 Saturday, April 16, 2022

©2022 - Greater Phoenix Orienteering Club  
 Contour Interval: 5 meters from NAIP Point Cloud  
 Vegetation: NDVI from 1m NAIP Images  
 gpoxo.org