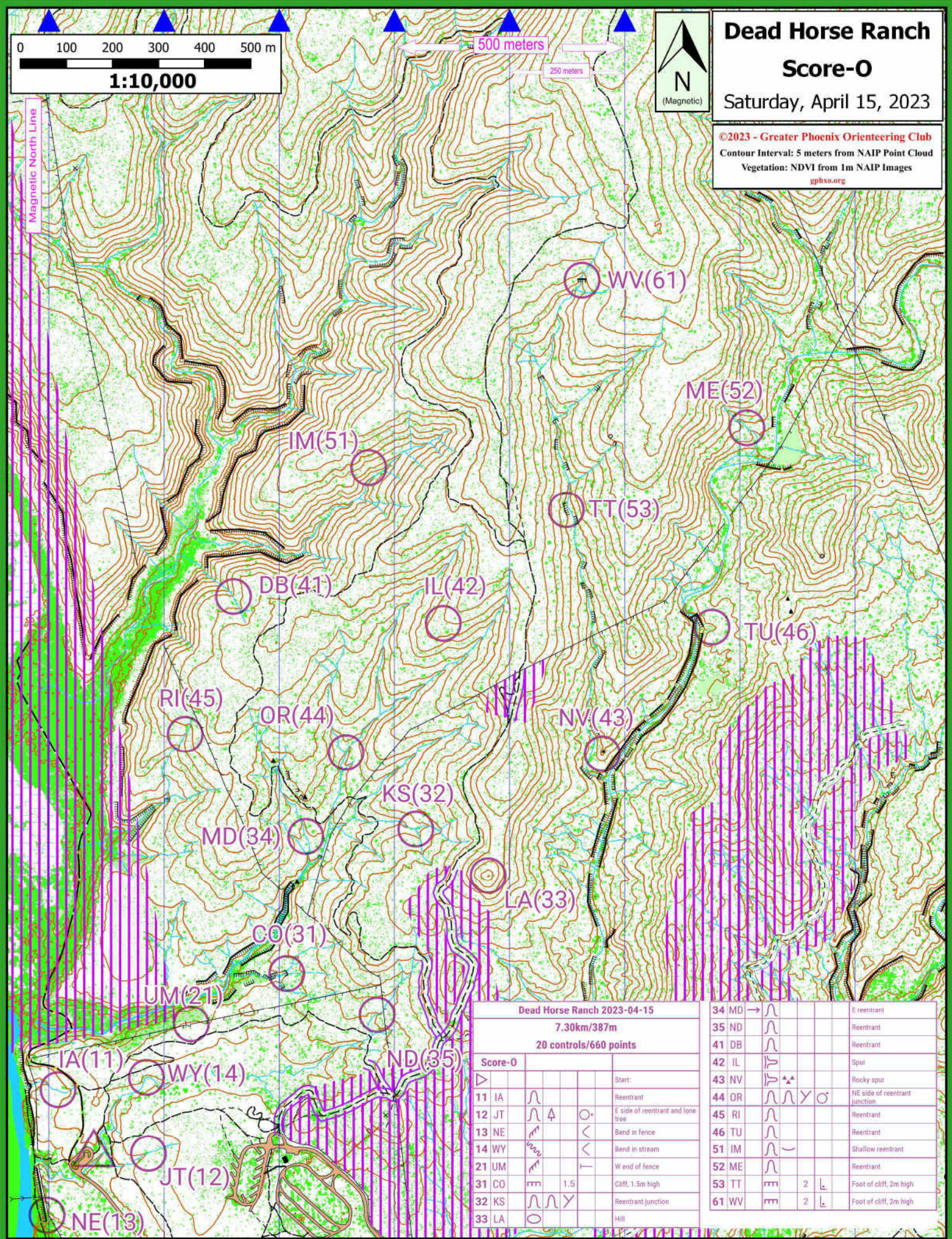


Dead Horse Ranch
Score-0
Saturday, April 15, 2023

©2023 - Greater Phoenix Orienteering Club
Contour Interval: 5 meters from NAIP Point Cloud
Vegetation: NDVI from 1m NAIP Images
gphxc.org



Dead Horse Ranch 2023-04-15

7.30km/387m

20 controls/660 points

| Score-0 | | | | Start: |
|---------|----|---|-----|-----------------------------------|
| 11 | IA | ∩ | | Reentrant |
| 12 | JT | ∩ | △ | E side of reentrant and lone tree |
| 13 | NE | ∩ | < | Bend in fence |
| 14 | WY | ∩ | < | Bend in stream |
| 21 | UM | ∩ | ⊥ | W end of fence |
| 31 | CO | ∩ | 1.5 | Cliff, 1.5m high |
| 32 | KS | ∩ | ∩ | Reentrant junction |
| 33 | LA | ∩ | | Hill |

| | | | | |
|----|----|---|---|-------------------------------|
| 34 | MD | ∩ | | E reentrant |
| 35 | ND | ∩ | | Reentrant |
| 41 | DB | ∩ | | Reentrant |
| 42 | IL | ∩ | | Spur |
| 43 | NV | ∩ | △ | Rocky spur |
| 44 | OR | ∩ | ∩ | NE side of reentrant junction |
| 45 | RI | ∩ | | Reentrant |
| 46 | TU | ∩ | | Reentrant |
| 51 | IM | ∩ | | Shallow reentrant |
| 52 | ME | ∩ | | Reentrant |
| 53 | TT | ∩ | 2 | Foot of cliff, 2m high |
| 61 | WV | ∩ | 2 | Foot of cliff, 2m high |