

Rainbow Forest

4-Hour Rogaine

Sunday, October 15, 2023



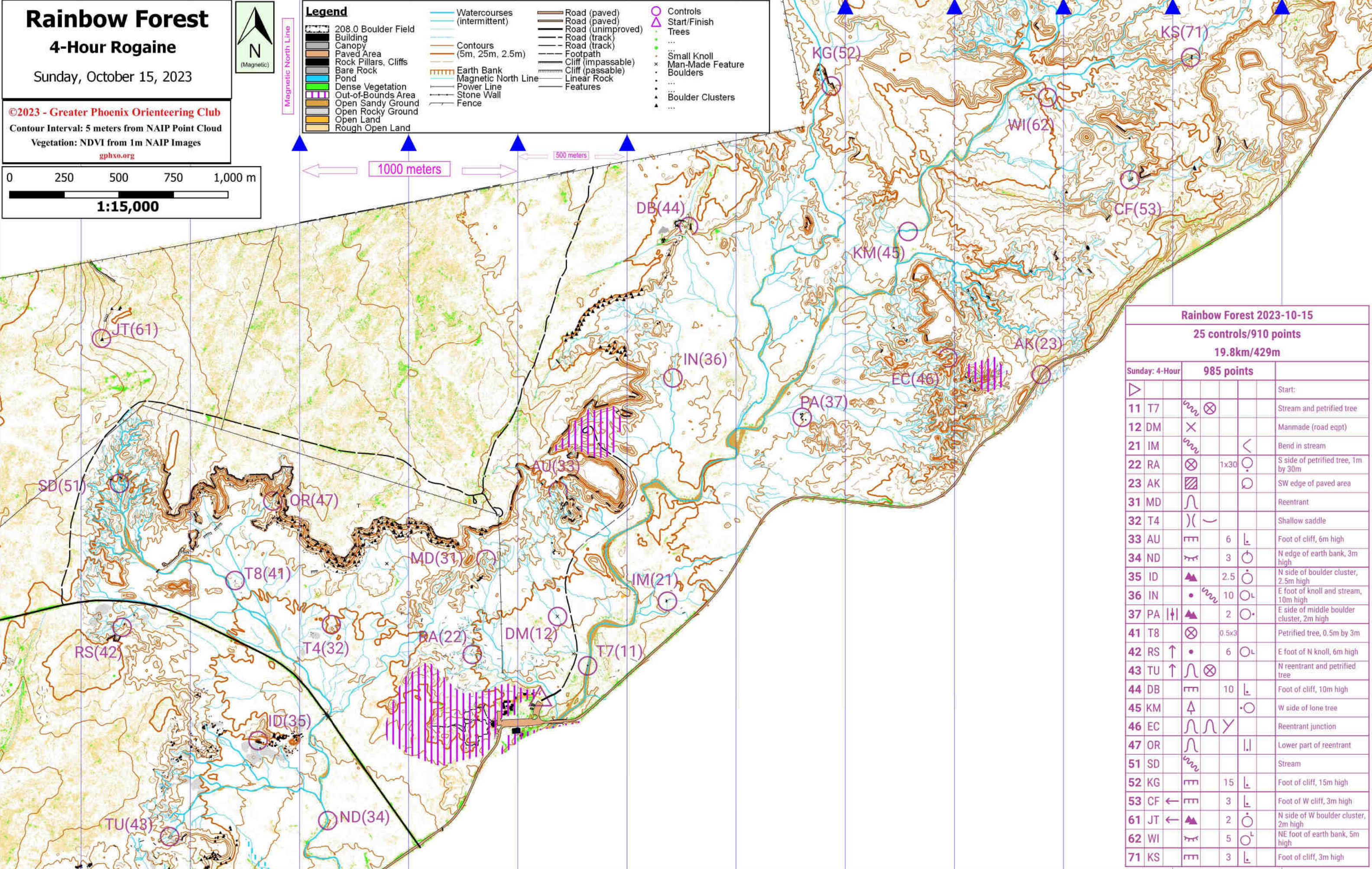
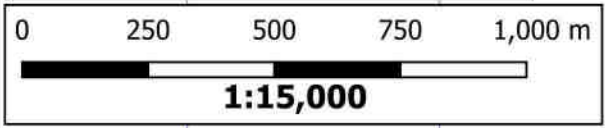
Legend

- 208.0 Boulder Field
- Building
- Canopy
- Paved Area
- Rock Pillars, Cliffs
- Bare Rock
- Pond
- Dense Vegetation
- Out-of-Bounds Area
- Open Sandy Ground
- Open Rocky Ground
- Open Land
- Rough Open Land

- Watercourses (intermittent)
- Contours (5m, 25m, 2.5m)
- Earth Bank
- Magnetic North Line
- Power Line
- Stone Wall
- Fence

- Road (paved)
- Road (unimproved)
- Road (track)
- Footpath
- Cliff (impassable)
- Cliff (passable)
- Linear Rock
- Features

- Controls Start/Finish Trees
- Small Knoll
- Man-Made Feature
- Boulders
- Boulder Clusters



Rainbow Forest 2023-10-15					
25 controls/910 points					
19.8km/429m					
Sunday: 4-Hour	985 points				
▶					Start:
11 T7	⊗				Stream and petrified tree
12 DM	×				Manmade (road eqpt)
21 IM	⊗		<		Bend in stream
22 RA	⊗	1x30	○		S side of petrified tree, 1m by 30m
23 AK	▨		○		SW edge of paved area
31 MD	∩				Reentrant
32 T4) (Shallow saddle
33 AU	▬	6	⊥		Foot of cliff, 6m high
34 ND	⌒	3	○		N edge of earth bank, 3m high
35 ID	▲	2.5	○		N side of boulder cluster, 2.5m high
36 IN	•	10	○		E foot of knoll and stream, 10m high
37 PA	▨	2	○		E side of middle boulder cluster, 2m high
41 T8	⊗	0.5x3			Petrified tree, 0.5m by 3m
42 RS	↑	6	○		E foot of N knoll, 6m high
43 TU	↑		⊗		N reentrant and petrified tree
44 DB	▬	10	⊥		Foot of cliff, 10m high
45 KM	↑		○		W side of lone tree
46 EC	∩		∩		Reentrant junction
47 OR	∩				Lower part of reentrant
51 SD	⊗				Stream
52 KG	▬	15	⊥		Foot of cliff, 15m high
53 CF	←	3	⊥		Foot of W cliff, 3m high
61 JT	←	2	○		N side of W boulder cluster, 2m high
62 WI	⌒	5	○		NE foot of earth bank, 5m high
71 KS	▬	3	⊥		Foot of cliff, 3m high